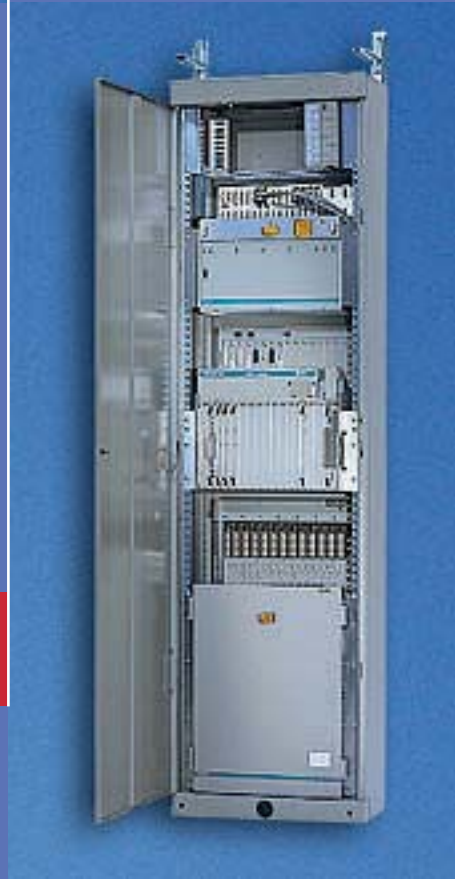


ETS Rack

1.32 to 1.36



ETS Rack Strong points

1 Flexibility

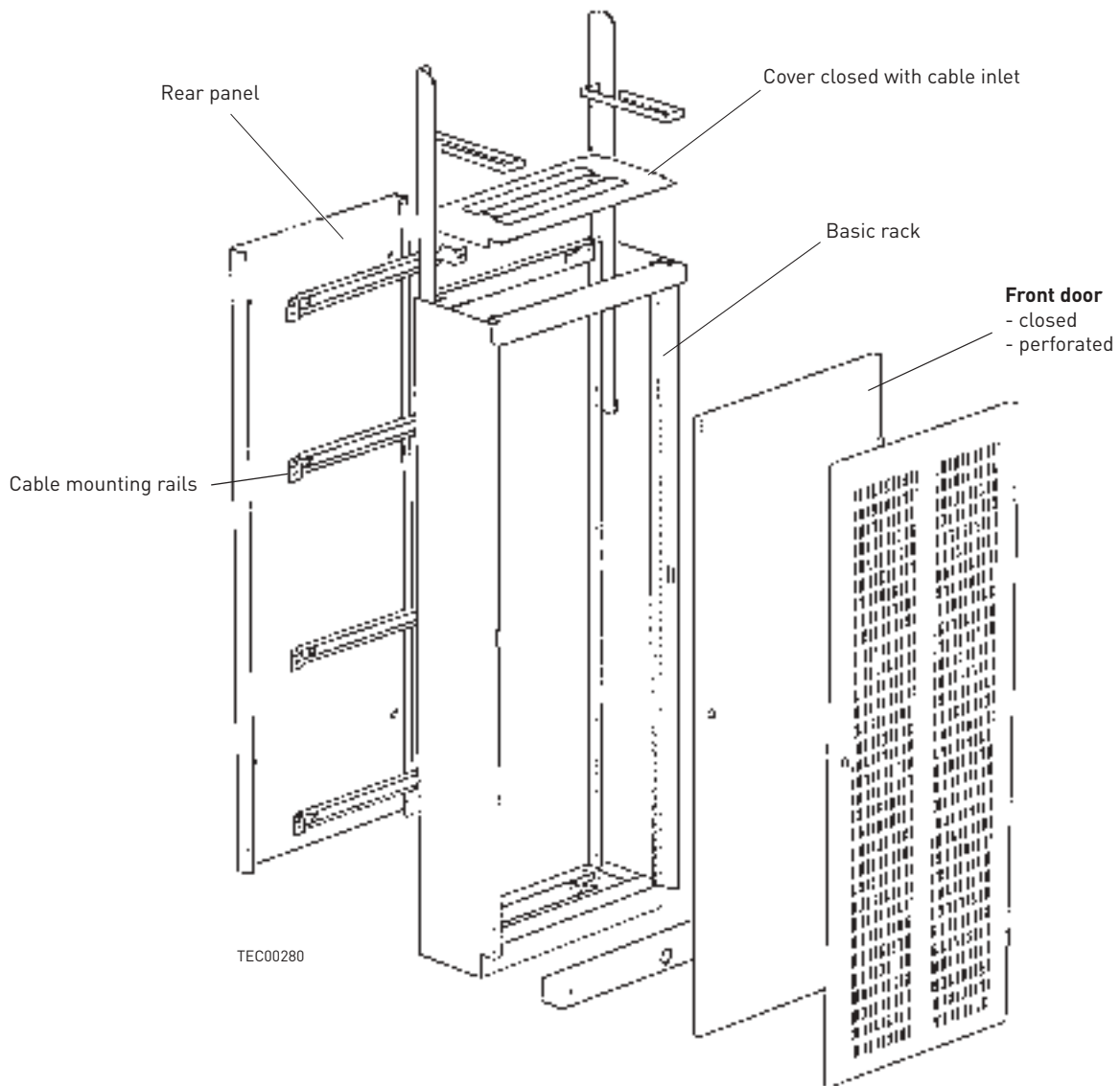
- The height-adjustable wall mounting allows flexible mounting for the rack to match surrounding environments.
- Optional cable entry over grid flooring or hollow flooring.

Approval

The ETS racks have the Deutsche Telekom certificate of approval.

Ventilation

The rack construction design favours natural convection.





1 TEC00030

Tecoras ETS Rack
Technical data

The ETS system rack complies with ETS 300 119-3 (European Telecommunications Standard) and the technical supply conditions 5805-3158 of Deutsche Telekom for installation in accordance with IEC 917 and IEC 297.

Material

- Basic rack, sheet steel 2.0 mm
- Doors and rear panel, sheet steel 1.0 mm
- Roof, sheet steel 1.5 mm
- Plinth trim, sheet steel 2.0 mm

Finish

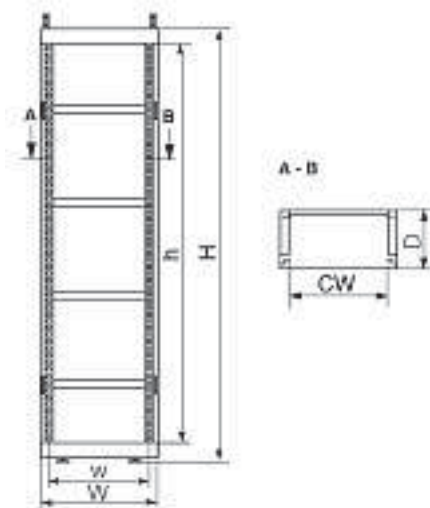
- Vertical posts and mounting brackets for cable grid connection, zinc passivated and chrome-plated (Fe/Zn 6-12 cB)
- Basic racks, doors, rear panel and plinth trim, powder-coated RAL 7032, pebble grey textured

Configuration

Stationary, on levelling feet

Static loads

- Maximum load with uniform distribution: 2300 N
- Maximum permissible load with cable runway and cable: 1900 N
- Maximum compressive load on the floor exerted by feet: 490 N/cm²



TEC00083

ETS Rack Dimensioning

W	H	D	CW	w	h	d
600	2200	300	500	515	2052	240



TEC00090

ETS Rack H 2200, d 240 welded

For installations in accordance with IEC 917 and IEC 297

ETS System rack complies with ETS 300 119-3 (European Telecommunications Standard) and the technical supply conditions 5805-3158 of Deutsche Telekom for installations in accordance with IEC 917 and IEC 297.

Standard features

- Welded version, height 2200 mm consists of:
 - 1 Basic rack consisting of 2 side panels and 4 bracing struts
 - 2 Levelling feet
 - 4 Cable restraints
 - 2 ESD Jacks
 - 30 Caged nuts M6 (pack)

W	H	D	HU/U	h	d	Model	Order no.	UP
600	2200	300	82M	2050	240	ETS Rack	01.100.001.3	1 unit
						Front door closed	01.100.010.3	1 unit
						Front door perforated	01.100.011.3	1 unit
						Rear panel	01.100.021.3	1 unit
						Root, closed	01.100.031.3	1 unit
						Plinth trim with option for socket	01.100.053.3	1 unit



TEC00251

ETS Rack H 2200, d 240 flat packed

For installations in accordance with IEC 917 and IEC 297

Standard features

- Flat pack version, height 2200 mm, for mounting on-site, consisting of:
 - 2 Side panels
 - 4 Bracing struts
 - 2 Levelling feet
 - 4 Cable restraints
 - 2 ESD Jacks
 - 2 L Rails with cable holder for connection to the cable grid
 - Mounting material
 - 30 Caged nuts M6 (pack)

W	H	D	HU/U	h	d	Model	Order no.	UP
600	2200	300	82M	2050	240	ETS Rack	01.100.003.3	1 unit