



knürr
World of control rooms

PUBLIC SAFETY & DEFENCE

MOBILE INFRASTRUCTURE

**DEPLOYABLE CONTAINERISED SOLUTIONS FOR COMMAND,
SITUATIONAL AWARENESS AND OPERATIONAL COORDINATION**



KNÜRR® IMCC

INTEGRATED MOBILE COMMAND & CONTROL CENTER

A COMPACT, DEPLOYABLE AND FULLY INTEGRATED MOBILE COMMAND CENTER – READY FOR IMMEDIATE USE AS A PLUG-AND-PLAY SOLUTION



Mobile command centres that are more than just a shell

Knürr's mobile infrastructure solutions create fully functional working and command environments for military, law enforcement and civil applications. A robust container base is transformed into an operational space for communication, coordination, situation management and surveillance – complete with integrated workstation and technical infrastructure.

Whether a mobile command post, mobile control centre or temporary local coordination center: what matters is not just

transportability, but the quality of the working environment in the field. This is precisely where Knürr brings its experience from control rooms and command centres to bear in deployable solutions.

Key benefits at a glance:

- A robust, deployable platform for mobile command and operational tasks.
- Integrated infrastructure for IT, communications and visualisation.
- Structured interior fit-out for rapid deployment.
- Scalable for different operational profiles and configuration levels.

Areas of application

Mobile infrastructure is used wherever command and control capabilities need to be established, relocated or temporarily reinforced at short notice.

- **Mobile command posts and control center**

e.g. for tactical operations command, mobile staff workspaces and forward command posts.

- **Mobile command centres for law enforcement and emergency services**

e.g. in the event of major incidents, evacuations or as a temporary local backup control center.

- **Temporary situation and coordination center**

e.g. for crisis management teams, major events and cross-agency operational coordination.

- **Mobile communication and monitoring stations**

e.g. for video surveillance, perimeter security and mobile communication nodes.

- **Deployable working environments for safety-critical applications**

e.g. for temporary IT centres, technical operations rooms and support units.



The benefits for you

Knürr does not view mobile infrastructure as merely a container, but as a fully operational end-to-end solution.

- Infrastructure ready for operation on site.
- Integration of workstation, IT and air conditioning into a single system.
- Clear separation of technical and operator areas.

- Ergonomic working conditions for extended periods of operation.
- Structured, service-friendly cable management and routing.
- Robust design for demanding environments.
- Modular and scalable to meet changing requirements.

Air conditioning system

The integrated air-conditioning system, comprising two split units, provides separately controlled climate zones for the operator and the utility room.

Installation locations:

- 1x utility room.
- 1x operator room.

Technical specifications per unit:

- Cooling capacity: 3.6 kW (variable output 1.37–4.30 kW).
- Heating capacity: 3.8 kW (variable output 1.00–4.38 kW).

- SEER: 7, SCOP: 4.2.
- Air flow rate, indoor unit: max. 530 m³/h.
- Sound pressure level, indoor unit: 21–37 dB(A).
- Sound pressure level, outdoor unit: 55.5 dB(A).
- Refrigerant: R32 (GWP 675).
- Operating range, cooling: –10 °C to +45 °C.
- Operating range, heating: –10 °C to +24 °C.



Utility room

The lockable equipment room provides space for the organised installation of 19-inch IT components up to 48U, as well as other technical infrastructure.

Technical details:

- 1 server cabinet: 48U.
- Width 800 mm.

- Depth 1000 mm.
- Vibration-damping mounting system.
- Concealed cable routing.
- Climatically separated.
- Ideal for servers, network equipment and industrial electronics.

Operator room

The robust and ergonomically optimised operator area can be configured in a modular fashion to suit specific operational requirements, thereby offering maximum flexibility.

Technical details:

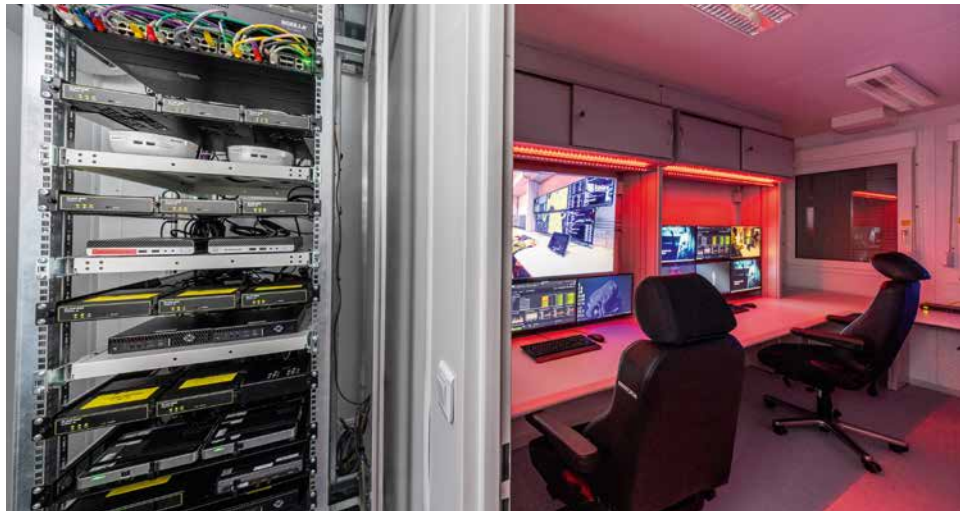
- 2x full workstations, width 1800 mm, depth 800 mm.
- Each with a 2-tier monitor rail for up to 6x 24-inch monitors per workstation.

- 2x sliding-door cabinets at the top for the secure storage of equipment and documents.
- 1x corner module for the ergonomic connection of workstations.
- 1x additional desk (W1000) in front of the windows.
- Completely concealed cable routing from the plant room.
- Fully integrated structure for tidy, safe and well-organised working environments.



Stable conditions for people and technology

A mobile operating environment must not only be available, but also remain functional at all times. The climate control system ensures reliable working conditions in the operator area whilst protecting sensitive IT and communications equipment. This ensures that the infrastructure remains efficient and fit for purpose, even in changing environmental conditions.



Utility room: Tidy, secure, accessible

The separate technical room creates a clear functional separation between operations and infrastructure. Servers, network equipment and utility systems can be integrated in a structured manner, housed in a secure environment and kept easily accessible for maintenance or upgrades. This improves clarity, serviceability and operational reliability.

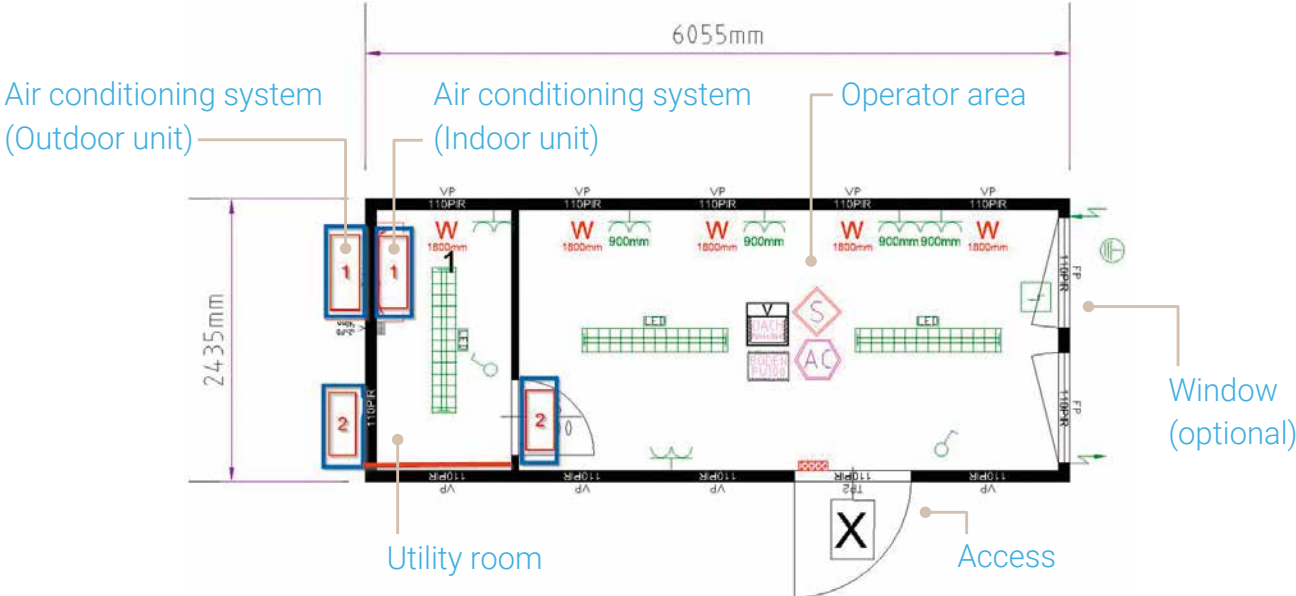
Operator room: Working ergonomically in the field

The operator area is designed to facilitate focused, structured work. Ergonomic workstations, integrated monitor connections and neat cable management support safe procedures, clear information processing and a professional working environment – even when communication, situational awareness and documentation are being managed simultaneously.



20-foot containerised unit (ISO)

Sample configuration





Rear view with air conditioning unit

From mobile infrastructure to a fully operational solution

Knürr provides a comprehensive, well-thought-out concept for mobile control and working environments. This ranges from the technological integration of workstations, including

visualisation and signal management, to climate control solutions, installation and commissioning. The result is a solution that is engineered for operational reliability and practical deployment. This transforms a portable unit into a fully functional workspace for mission-critical applications.

WE HAVE SOLUTIONS

OUR SOLUTIONS ENSURE RELIABLE 24/7 OPERATION OF MISSION-CRITICAL COMMAND AND CONTROL CENTERS IN MILITARY ENVIRONMENTS. WITH SOUND ENGINEERING, ERGONOMIC SYSTEM DESIGN AND MANY YEARS OF DEFENCE EXPERTISE, WE SUPPORT SECURE AND EFFICIENT DECISION-MAKING PROCESSES.

OUR RANGE OF SERVICES FOR LAW ENFORCEMENT AND DEFENCE:

- | | |
|--|--|
|  INTEGRATED WORKSTATION SYSTEMS |  THERMAL & INFRASTRUCTURE MANAGEMENT |
|  VISUALISATION AND LARGE-SCREEN DISPLAY SOLUTIONS |  DESIGN, MANUFACTURE, INSTALLATION & COMMISSIONING |
|  KVM, POWER & SIGNAL MANAGEMENT |  LIFECYCLE SERVICE, MAINTENANCE |



knürr
World of control rooms

INDUSTRY EXPERTISE

KNÜRR SPECIALISES IN MISSION-CRITICAL WORKSTATION SYSTEMS FOR LAW ENFORCEMENT AND MILITARY ENVIRONMENTS – DESIGNED FOR MAXIMUM AVAILABILITY, TECHNICAL COMPATIBILITY AND LONG-TERM INVESTMENT.

WITH OUR IN-DEPTH ENGINEERING EXPERTISE AND COMPREHENSIVE SYSTEM INTEGRATION, WE SUPPORT PUBLIC SAFETY AGENCIES, AS WELL AS ARMED FORCES, WITH MISSION-CRITICAL INFRASTRUCTURE – BOTH FIXED AND MOBILE.

CONTACT:

Knürr GmbH
Tel.: +49 8723 28 0
info@knuerr.com

knuerr.com | Knürr GmbH, Mariakirchener Straße 38, 94424 Arnstorf, Germany ID-Nr. DE 363797731

© 2026 Knürr GmbH. All rights reserved. Knürr® and the Knürr logo are trademarks or registered trademarks of Knürr GmbH. All other names and logos referred to are trade names, trademarks or registered trademarks of their respective owners. While every precaution has been taken to ensure accuracy and completeness herein, Knürr GmbH assumes no responsibility, and disclaims all liability, for damages resulting from use of this information or for any errors or omissions. Specifications are subject to change without notice.
AI-edited.