



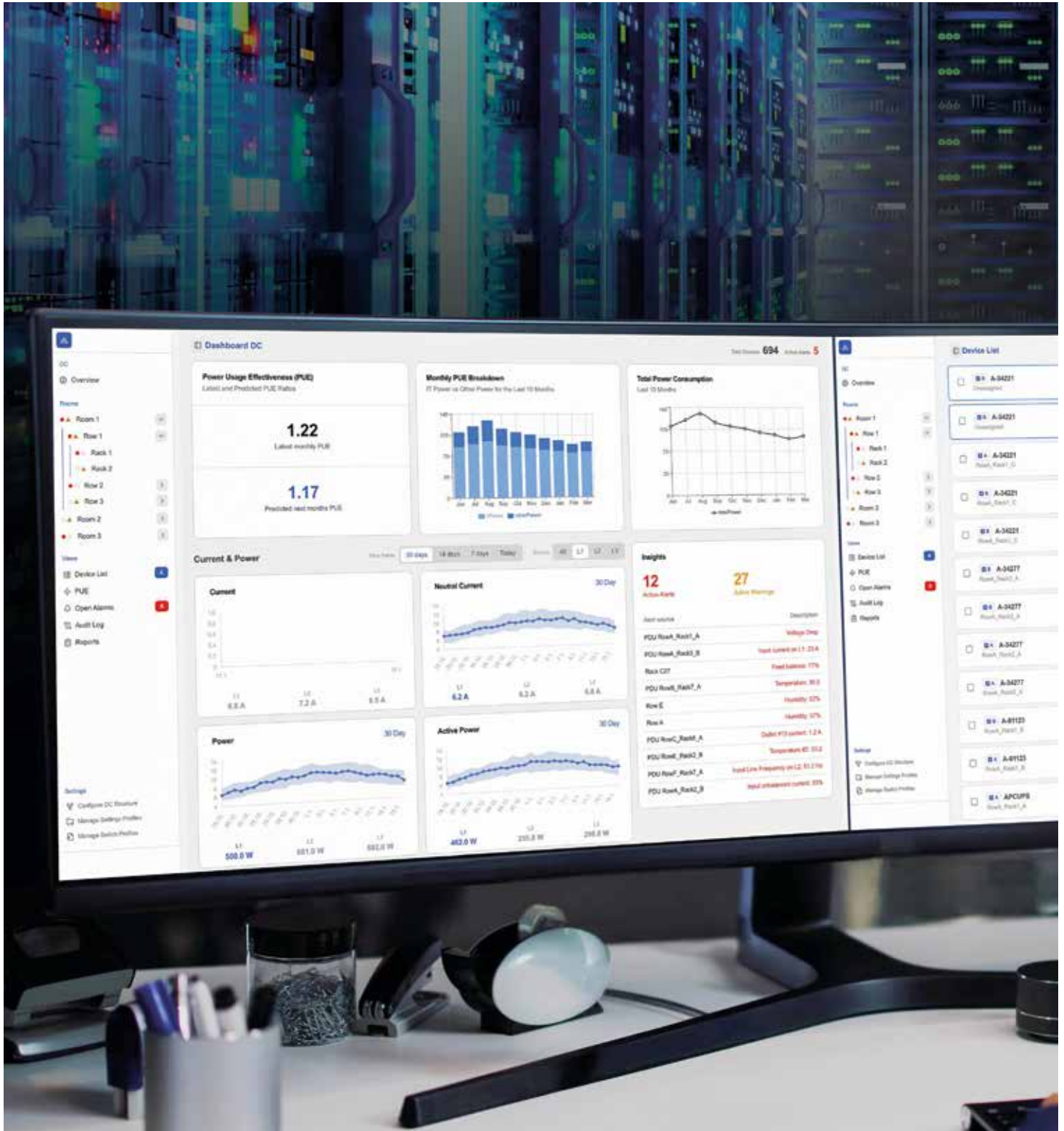
**knürr**  
World of control rooms

# CONTROL ROOM SOLUTIONS BOOK

2026 / EN-V1

# KNÜRR® CEC - CONSOLE ENVIRONMENT CONTROL

193 bis 206



# KNÜRR® CEC - CONSOLE ENVIRONMENT CONTROL

For maximum reliability and control of your 24/7 equipment in the console

Whether in an emergency call centre, an industrial control room or a monitoring station, high-availability technology is in use around the clock everywhere. The investments required for this are considerable, and every component, from the power supply to the image output device, is crucial for the availability of the systems.

Protect your IT investments with Knürr® Console Environment Control (CEC) and maintain control and oversight at all times.

Knürr® CEC is much more than just a power supply and distribution system in the console! Equipped with a network interface, it enables remote monitoring and management as well as automatic notifications.

Knürr® CEC provides important insights into how you can improve energy efficiency in the control room while avoiding downtime.

If user-defined limits for e.g. temperature or current are exceeded, you will receive an immediate notification, allowing you to maintain a complete overview of the network of devices.

## ENERGY



## INTEGRATION



## MONITORING & SURVEILLANCE





### Knürr® CEC unit

Remote monitoring and management via integrated network interface and automatic notifications

### Door position sensor

The sensor detects whether a cover on the technical area is open or closed. E.g. during maintenance work.

### Temperature sensor

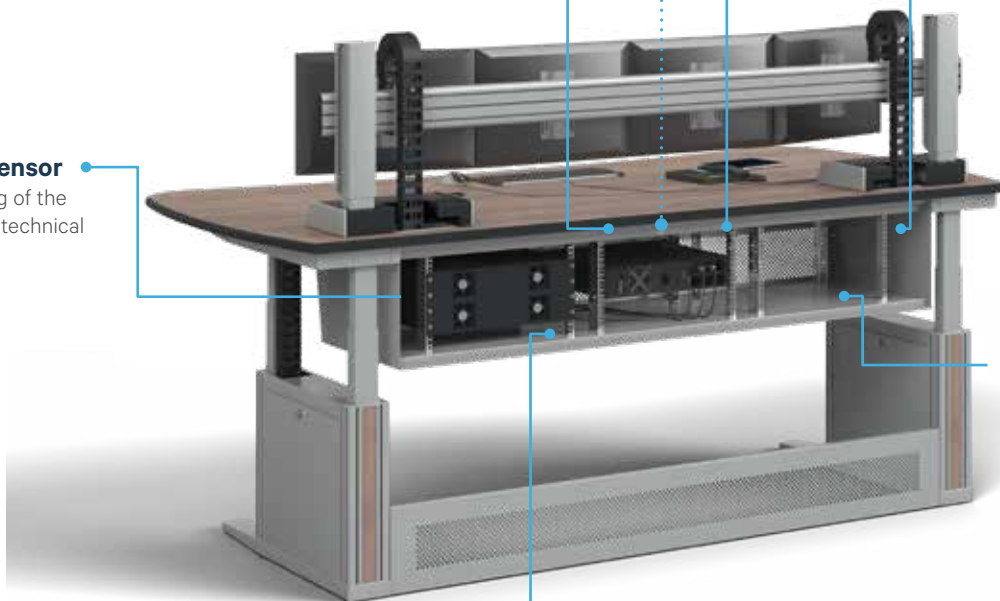
For easy monitoring of the temperature in the technical area

### Temperature/ Humidity/ Dew point/ Air flow

The sensor provides important information to prevent premature device failure due to operating conditions outside the permissible range.

### Analogue-to-digital converter

enables users to connect a potential-free contact, a 0-10 V or 4-20 mA sensor to an RJ12/ plug-and-play sensor connection.



# Features and Benefits

- Real-time monitoring: Alarm management, trend analysis and data analysis using Knürr® CEC management software, even across multiple locations.
- Remote display: Connection via NFC for intuitive and clear local display on site.
- External sensors: Monitor environmental conditions in the console, such as temperature, humidity, door contact and output contacts.
- Centralised management: The integration of management functions into the CEC software reduces the cost of each individual unit.

- Management software included: No additional costs for management software, as it is already included in the scope of delivery.
- Efficient networking: Daisy chaining of up to 100 CECs reduces network costs.
- Easy installation: Quick and easy installation thanks to autoscan function and mass firmware and configuration updates.
- Hot-swappable communication card (tool-free and ESD-safe): Supports various requirements for monitoring the CEC unit, either via the integrated software as a central management system or through direct integration into existing DCIM systems.

## Environmental monitoring

Proactively monitor environmental conditions in the console to ensure optimal operating conditions. A variety of sensors are available to meet your requirements, including temperature, humidity, door position and more. Up to 32 sensors can be connected to a CEC unit. Additional forwarding of alarms via potential-free outputs.

## Output socket

Available as either a single-phase or three-phase version

## Intelligent networking

Daisy chain connection of all devices to a single IP address. Reduces deployment time with self-configuration of downstream devices.

## Remote connectivity

Access the Knürr® CEC remotely via the network interface or a serial connection to monitor power consumption and configure customised alerts to prevent downtime.

## Fault-tolerant chaining

Simplifies intelligent connectivity and ensures that data is reported even if there is an interruption in the network chain.

## Power monitoring with 1% accuracy

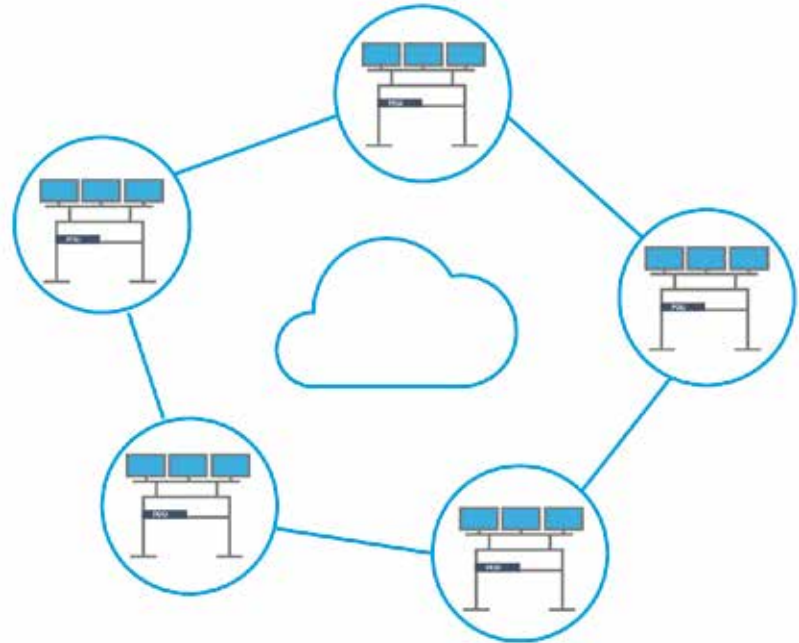
Enables precise monitoring of input and outlet level energy consumption with 1% monitoring accuracy in accordance with ANSI and IEC standards.



# Knürr® CEC communication module

## PLUG-N-PLAY INFRASTRUCTURE FOR CONTROL ROOMS ENABLES LIGHTNING-FAST DEPLOYMENT

- For monitored and switched units, users have the option of linking devices with a single IP address.
- Users are able to bundle data by grouping devices by console or room.
- Downstream devices configure themselves, significantly reducing deployment time.



## Convenient browser-based application



### Perfect overview

Thanks to the convenient browser-based management of Knürr® CEC units, you always have an overview of the relevant values and environmental variables.

# Knürr® CEC with differential current measurement

## OVERVIEW

With the increasing complexity of process automation, digital control technology and 24/7 availability, the demands placed on control rooms as the heart of many safety-critical systems are growing. Just as in data centres, protection against power failures, disruptions and technical malfunctions is essential. Continuous residual current monitoring (RCM) makes a decisive contribution to this.

### RCM in the control room: the basis for availability and safety

Control rooms are central hubs for industrial processes, energy supply, traffic control centres and safety-related infrastructure. They must function without disruption at all times. Continuous residual current measurement is a key tool in this regard:

- Early detection of insulation faults and leakage currents: RCM systems detect fault currents at an early stage before they can lead to equipment malfunctions, corrosion or even fires.
- Prevention of operational downtime: Instead of sudden shutdowns caused by conventional RCDs, RCM allows for targeted and plannable maintenance.
- Legal compliance: Regulations such as DIN VDE 0105-100/A1 or DIN EN 50600-2-2 increasingly require continuous monitoring, even in environments such as control rooms or switch rooms.
- Sustainability and efficiency: Permanent monitoring reduces testing costs and meets operational safety requirements..

### Technical implementation: From network monitoring to preventive maintenance

RCM technology compares the electricity fed in and flowing back. Differences indicate fault currents – e.g. due to damaged cables, insulation damage or faulty consumers. These can be identified in the control room by

- Modular measuring systems,
- Connection to higher-level control technology (e.g. SCADA, BMS),
- Centralised alarm system and documentation

efficiently and centrally. This is a strategic advantage, especially for systems with high availability requirements (e.g. control centres, energy distribution, traffic control centres).



### **Economic advantages and strategic security**

In addition to the technical necessity, RCM also offers economic and organisational advantages:

- Minimisation of unplanned downtime
- Fewer maintenance cycles thanks to targeted maintenance
- Transparency regarding power quality issues
- Reduction in insurance costs and liability risks

### **Conclusion: Residual current measurement is mandatory in modern control room design.**

Today's control rooms are no longer static operating rooms – they are highly networked, safety-critical control centres. Continuous residual current monitoring is therefore standard in any future-proof infrastructure planning. RCM should be taken into account as early as the design phase – not only to comply with legal requirements, but also as a tool for safeguarding technical operations management.

**Those who continuously monitor their control room technology can respond more quickly, avoid downtime and sustainably improve operational reliability.**



## Knürr® CEC - Inline metering

Version - Inline Metering	phases	Order-no.	UP
Knürr® CEC with 1-phase 16A Schuko (master)	1-phase	03.800.001.9	1 unit
Knürr® CEC with 1-phase 16A Schuko (slave)	1-phase	03.800.002.9	1 unit
Knürr® CEC with 1-phase 16A Schuko (master) with RCM	1-phase	03.800.003.9	1 unit
Knürr® CEC with 1-phase 16A Schuko (slave) with RCM	1-phase	03.800.004.9	1 unit

### KNÜRR® CEC - INLINE METERING 1-PHASE

Model	CEC Master 1ph	CEC Slave 1ph	CEC Master 1ph RCM	CEC Slave 1ph RCM
<b>Order-no.</b>	03.800.001.9	03.800.002.9	03.800.003.9	03.800.004.9
<b>Standard information</b>	<b>Input values:</b> 1ph, 16 A, 230 V AC, 50 Hz 1x CEE7/3 Schuko type F <b>Supply cable:</b> 3 m (Schuko) 16 A plug Integrated function for measuring voltage, current, reactive, apparent and active power, frequency, power factor, crest factor, THD;	<b>Input values:</b> 1ph, 16 A, 230 V AC, 50 Hz 1x CEE7/3 Schuko type F <b>Supply cable:</b> 3 m (Schuko) 16 A plug Integrated function for measuring voltage, current, reactive, apparent and active power, frequency, power factor, crest factor, THD;	<b>Input values:</b> 1ph, 16 A, 230 V AC, 50 Hz 1x CEE7/3 Schuko type F <b>Supply cable:</b> 3 m (Schuko) 16 A plug Integrated function for measuring voltage, current, reactive, apparent and active power, frequency, power factor, crest factor, THD; <b>with residual current measurement RCM type B;</b>	<b>Input values:</b> 1ph, 16 A, 230 V AC, 50 Hz 1x CEE7/3 Schuko type F <b>Supply cable:</b> 3 m (Schuko) 16 A plug Integrated function for measuring voltage, current, reactive, apparent and active power, frequency, power factor, crest factor, THD; <b>with residual current measurement RCM type B;</b>
<b>Communication module</b>	<b>Controller module</b> , tool-free replacement during operation; integrated web interface for monitoring and management Display: Remote display wireless (via NFC app), Android or iOS LED ring light for status display and warning;	<b>Daisy chain module</b> , tool-free replacement during operation; for connection to a controller or gateway module Display: Remote display wireless (via NFC app), Android or iOS LED ring light for status display and warning;	<b>Controller module</b> , tool-free replacement during operation; integrated web interface for monitoring and management Display: Remote display wireless (via NFC app), Android or iOS LED ring light for status display and warning;	<b>Daisy chain module</b> , tool-free replacement during operation; for connection to a controller or gateway module Display: Remote display wireless (via NFC app), Android or iOS LED ring light for status display and warning;
<b>Supported network protocols</b>	Embedded SSL Security (HTTPS), IPv4, IPv6, DHCP, DNS, HTTP, HTTPS, SSL, SNMP v1/2c/3, SNMP TRAPS, Modbus/TCP, REST-API, NTP, SMTP, WebSocket, Syslog, Command Line; Data export to MS SQL, MySQL and MariaDB	None, as network connection is only possible via gateway or controller module	Embedded SSL Security (HTTPS), IPv4, IPv6, DHCP, DNS, HTTP, HTTPS, SSL, SNMP v1/2c/3, SNMP TRAPS, Modbus/TCP, REST-API, NTP, SMTP, WebSocket, Syslog, Command Line; Data export to MS SQL, MySQL and MariaDB	None, as network connection is only possible via gateway or controller module
<b>Connectivity</b>	Data bus: 2xRJ45 daisy chain; Ethernet: RJ45; Sensor port: 2 x USB	Datenbus: 2xRJ45-Daisy-Chain; Sensoranschluss: 2 x USB	Data bus: 2xRJ45 daisy chain; Ethernet: RJ45; Sensor port: 2 x USB	Datenbus: 2xRJ45-Daisy-Chain; Sensoranschluss: 2 x USB
<b>Mounting bracket</b>	19" mounting bracket, installation height 1.5 U	19" mounting bracket, installation height 1.5 U	19" mounting bracket, installation height 1.5 U	19" mounting bracket, installation height 1.5 U
<b>Management type</b>	Input Metered	Input Metered	Input Metered	Input Metered
<b>Differential current measurement</b>	No	No	Yes; self-test every 6 hours; measurement of: DC, pulsed DC and AC up to 1 kHz (effective value)	Yes; self-test every 6 hours; measurement of: DC, pulsed DC and AC up to 1 kHz (effective value)
<b>Power output Sockets</b>	1x CEE 7/3 (type F) (Schuko)	1x CEE 7/3 (type F) (Schuko)	1x CEE 7/3 (type F) (Schuko)	1x CEE 7/3 (type F) (Schuko)

Version - Inline Metering	phases	Order-no.	UP
Knürr® CEC mit 3-Phasen 16A Schuko (Master)	3-Phasen	03.800.005.9	1 unit
Knürr® CEC mit 3-Phasen 16A Schuko (Slave)	3-Phasen	03.800.006.9	1 unit
Knürr® CEC mit 3-Phasen 16A Schuko (Master) mit RCM	3-Phasen	03.800.007.9	1 unit
Knürr® CEC mit 3-Phasen 16A Schuko (Slave) mit RCM	3-Phasen	03.800.008.9	1 unit

## KNÜRR® CEC - INLINE METERING 3-PHASEN

Model	CEC Master 3ph	CEC Slave 3ph	CEC Master 3ph RCM	CEC Slave 3ph RCM
<b>Order-no.</b>	<b>03.800.005.9</b>	<b>03.800.006.9</b>	<b>03.800.007.9</b>	<b>03.800.008.9</b>
<b>Standard information</b>	<b>Input values:</b> 3ph, 16 A, 230/400 V AC, 50 Hz; <b>Output:</b> 3 x CEE 7/3 (Schuko, type F) 1ph, 16A, 230 V AC, 50 Hz <b>Supply cable:</b> 3 m 5G2.5 mm <sup>2</sup> with open end, without plug Integrated function for measuring voltage, current, reactive, apparent and active power, frequency, power factor, crest factor, THD;	<b>Input values:</b> 3ph, 16 A, 230/400 V AC, 50 Hz; <b>Output:</b> 3 x CEE 7/3 (Schuko, type F) 1ph, 16A, 230 V AC, 50 Hz <b>Supply cable:</b> 3 m 5G2.5 mm <sup>2</sup> with open end, without plug Integrated function for measuring voltage, current, reactive, apparent and active power, frequency, power factor, crest factor, THD;	<b>Input values:</b> 3ph, 16 A, 230/400 V AC, 50 Hz; <b>Output:</b> 3 x CEE 7/3 (Schuko, type F) 1ph, 16A, 230 V AC, 50 Hz <b>Supply cable:</b> 3 m 5G2.5 mm <sup>2</sup> with open end, without plug Integrated function for measuring voltage, current, reactive, apparent and active power, frequency, power factor, crest factor, THD; <b>with residual current measurement RCM type B;</b>	<b>Input values:</b> 3ph, 16 A, 230/400 V AC, 50 Hz; <b>Output:</b> 3 x CEE 7/3 (Schuko, type F) 1ph, 16A, 230 V AC, 50 Hz <b>Supply cable:</b> 3 m 5G2.5 mm <sup>2</sup> with open end, without plug Integrated function for measuring voltage, current, reactive, apparent and active power, frequency, power factor, crest factor, THD; <b>with residual current measurement RCM type B;</b>
<b>Communication module</b>	<b>Controller module</b> , tool-free replacement during operation; integrated web interface for monitoring and management Display: Remote display wireless (via NFC app), Android or iOS LED ring light for status display and warning;	<b>Daisy chain module</b> , tool-free replacement during operation; for connection to a controller or gateway module Display: Remote display wireless (via NFC app), Android or iOS LED ring light for status display and warning;	<b>Controller module</b> , tool-free replacement during operation; integrated web interface for monitoring and management Display: Remote display wireless (via NFC app), Android or iOS LED ring light for status display and warning;	<b>Daisy chain module</b> , tool-free replacement during operation; for connection to a controller or gateway module Display: Remote display wireless (via NFC app), Android or iOS LED ring light for status display and warning;
<b>Supported network protocols</b>	Embedded SSL Security (HTTPS), IPv4, IPv6, DHCP, DNS, HTTP, HTTPS, SSL, SNMP v1/2c/3, SNMP Trap, Modbus TCP, IPAPI, NTP, SMTP, WebSocket, Syslog, SSH Command Line Interface. Data export to MySQL and SQL Server	None, as network connection is only possible via gateway or controller module	Embedded SSL Security (HTTPS), IPv4, IPv6, DHCP, DNS, HTTP, HTTPS, SSL, SNMP v1/2c/3, SNMP Trap, Modbus TCP, IPAPI, NTP, SMTP, WebSocket, Syslog, SSH Command Line Interface. Data export to MySQL and SQL Server.	None, as network connection is only possible via gateway or controller module
<b>Connectivity</b>	Data bus: 2xRJ45 daisy chain; Ethernet: RJ45; Sensor port: 2 x USB	Datenbus: 2xRJ45-Daisy-Chain; Sensoranschluss: 2 x USB	Datenbus: 2xRJ45-Daisy-Chain; Ethernet: RJ45; Sensoranschluss: 2 x USB inkl.	Datenbus: 2xRJ45-Daisy-Chain; Sensoranschluss: 2 x USB
<b>Mounting bracket</b>	19" mounting bracket, installation height 1.5 U	19" mounting bracket, installation height 1.5 U	19" mounting bracket, installation height 1.5 U	19" mounting bracket, installation height 1.5 U
<b>Management type</b>	Input Metered	Input Metered	Input Metered	Input Metered
<b>Differential current measurement</b>	No	No	Yes; self-test every 6 hours; measurement of: DC, pulsed DC and AC up to 1 kHz (effective value)	Yes; self-test every 6 hours; measurement of: DC, pulsed DC and AC up to 1 kHz (effective value)
<b>Power output Sockets</b>	3x CEE 7/3 (type F) (Schuko)	3x CEE 7/3 (type F) (Schuko)	3x CEE 7/3 (type F) (Schuko)	3x CEE 7/3 (type F) (Schuko)

## Knürr® CEC – Inline metering with measurement and switching per output

Version - Inline metering with measurement and switching per output	phases	Order-no.	UP
Knürr® CEC with 1-phase 16A Schuko (master)	1-phase	03.800.011.9	1 unit
Knürr® CEC with 1-phase 16A Schuko (slave)	1-phase	03.800.012.9	1 unit
Knürr® CEC with 1-phase 16A Schuko (master) with RCM	1-phase	03.800.013.9	1 unit
Knürr® CEC with 1-phase 16A Schuko (slave) with RCM	1-phase	03.800.014.9	1 unit

### KNÜRR® CEC – INLINE METERING WITH MEASUREMENT AND SWITCHING PER OUTPUT – 1-PHASE

Model	CEC master 1ph switchable	CEC slave 1ph switchable	CEC master 1ph switchable, with RCM	CEC Slave 1ph switchable, with RCM
<b>Order-no.</b>	03.800.011.9	03.800.012.9	03.800.013.9	03.800.014.9
<b>Standard information</b>	<b>Input values:</b> 1ph, 16 A, 230 V AC, 50 Hz1x CEE7/3 Schuko type F <b>Supply cable:</b> 3m (Schuko) 16A plug Integrated function for measuring voltage, current, reactive, apparent and active power, frequency, power factor, crest factor, THD;	<b>Input values:</b> 1ph, 16 A, 230 V AC, 50 Hz1x CEE7/3 Schuko type F <b>Supply cable:</b> 3m (Schuko) 16A plug Integrated function for measuring voltage, current, reactive, apparent and active power, frequency, power factor, crest factor, THD;	<b>Input values:</b> 1ph, 16 A, 230 V AC, 50 Hz1x CEE7/3 Schuko type F <b>Supply cable:</b> 3 m (Schuko) 16 A plug Integrated function for measuring voltage, current, reactive, apparent and active power, frequency, power factor, crest factor, THD; <b>with residual current measurement RCM type B;</b>	<b>Input values:</b> 1ph, 16 A, 230 V AC, 50 Hz1x CEE7/3 Schuko type F <b>Supply cable:</b> 3 m (Schuko) 16 A plug Integrated function for measuring voltage, current, reactive, apparent and active power, frequency, power factor, crest factor, THD; <b>with residual current measurement RCM type B;</b>
<b>Communication module</b>	<b>Controller module</b> , tool-free replacement during operation; integrated web interface for monitoring and management Display: Remote display wireless (via NFC app), Android or iOS LED ring light for status display and warning;	<b>Daisy chain module</b> , tool-free replacement during operation; for connection to a controller or gateway module Display: Remote display wireless (via NFC app), Android or iOS LED ring light for status display and warning;	<b>Controller module</b> , tool-free replacement during operation; integrated web interface for monitoring and management Display: Remote display wireless (via NFC app), Android or iOS LED ring light for status display and warning;	<b>Daisy chain module</b> , tool-free replacement during operation; for connection to a controller or gateway module Display: Remote display wireless (via NFC app), Android or iOS LED ring light for status display and warning;
<b>Supported network protocols</b>	Embedded SSL Security (HTTPS), IPv4, IPv6, DHCP, DNS, HTTP, HTTPS, SSL, SNMP v1/2c/3, SNMP TRAPS, Modbus/TCP, REST-API, NTP, SMTP, WebSocket, Syslog, Command Line; Data export to MS SQL, MySQL and MariaDB	None, as network connection is only possible via gateway or controller module	Embedded SSL Security (HTTPS), IPv4, IPv6, DHCP, DNS, HTTP, HTTPS, SSL, SNMP v1/2c/3, SNMP TRAPS, Modbus/TCP, REST-API, NTP, SMTP, WebSocket, Syslog, Command Line; Data export to MS SQL, MySQL and MariaDB	None, as network connection is only possible via gateway or controller module
<b>Connectivity</b>	Data bus: 2xRJ45 daisy chain; Ethernet: RJ45; Sensor port: 2 x USB	Data bus: 2xRJ45 daisy chain; Sensor connection: 2 x USB	Data bus: 2xRJ45 daisy chain; Ethernet: RJ45; Sensor port: 2 x USB	Data bus: 2xRJ45 daisy chain; Sensor port: 2 x USB
<b>Mounting bracket</b>	19" mounting bracket, installation height 1.5 U	19" mounting bracket, installation height 1.5 U	19" mounting bracket, installation height 1.5 U	19" mounting bracket, installation height 1.5 U
<b>Management type</b>	Switched	Switched	Switched	Switched
<b>Differential current measurement</b>	No	No	Yes; self-test every 6 hours; measurement of: DC, pulsed DC and AC up to 1 kHz (effective value)	Yes; self-test every 6 hours; measurement of: DC, pulsed DC and AC up to 1 kHz (effective value)
<b>Power output Sockets</b>	1x CEE 7/3 (type F) (Schuko)	1x CEE 7/3 (type F) (Schuko)	1x CEE 7/3 (type F) (Schuko)	1x CEE 7/3 (type F) (Schuko)

Version - Inline metering with measurement and switching per output	phases	Order-no.	UP
Knürr® CEC with 3-phase 16A Schuko (master)	3-phase	03.800.015.9	1 unit
Knürr® CEC with 3-phase 16A Schuko (slave)	3-phase	03.800.016.9	1 unit
Knürr® CEC with 3-phase 16A Schuko (master) with RCM	3-phase	03.800.017.9	1 unit
Knürr® CEC with 3-phase 16A Schuko (slave) with RCM	3-phase	03.800.018.9	1 unit

## KNÜRR® CEC – INLINE METERING WITH MEASUREMENT AND SWITCHING PER OUTPUT – 3-PHASE

Model	CEC master 3ph switchable	CEC slave 3-phase switchable	CEC master 3ph switchable, with RCM	CEC slave 3-phase switchable, with RCM
Order-no.	03.800.015.9	03.800.016.9	03.800.017.9	03.800.018.9
Standard information	<p><b>Input values:</b> 3ph, 16 A, 230/400 V AC, 50 Hz; Output: 3 x CEE 7/3 (Schuko, type F) 1ph, 16A, 230 V AC, 50 Hz</p> <p><b>Supply cable:</b> 3 m 5G2.5 mm<sup>2</sup> with open end, without plug</p> <p>Integrated function for measuring voltage, current, reactive, apparent and active power, frequency, power factor, crest factor, THD;</p>	<p><b>Input values:</b> 3ph, 16 A, 230/400 V AC, 50 Hz; Output: 3 x CEE 7/3 (Schuko, type F) 1ph, 16A, 230 V AC, 50 Hz</p> <p><b>Supply cable:</b> 3 m 5G2.5 mm<sup>2</sup> with open end, without plug</p> <p>Integrated function for measuring voltage, current, reactive, apparent and active power, frequency, power factor, crest factor, THD;</p>	<p><b>Input values:</b> 3ph, 16 A, 230/400 V AC, 50 Hz;</p> <p><b>Output:</b> 3 x CEE 7/3 (Schuko, type F) 1ph, 16A, 230 V AC, 50 Hz</p> <p><b>Supply cable:</b> 3 m 5G2.5 mm<sup>2</sup> with open end, without plug</p> <p>Integrated function for measuring voltage, current, reactive, apparent and active power, frequency, power factor, crest factor, THD; <b>with residual current measurement RCM type B;</b></p>	<p><b>Input values:</b> 3ph, 16 A, 230/400 V AC, 50 Hz;</p> <p><b>Output:</b> 3 x CEE 7/3 (Schuko, type F) 1ph, 16A, 230 V AC, 50 Hz</p> <p><b>Supply cable:</b> 3 m 5G2.5 mm<sup>2</sup> with open end, without plug</p> <p>Integrated function for measuring voltage, current, reactive, apparent and active power, frequency, power factor, crest factor, THD; <b>with residual current measurement RCM type B;</b></p>
Communication module	<p><b>Controller module</b>, tool-free replacement during operation; integrated web interface for monitoring and management</p> <p>Display: Remote display wireless (via NFC app), Android or iOS LED ring light for status display and warning;</p>	<p><b>Daisy chain module</b>, tool-free replacement during operation; for connection to a controller or gateway module</p> <p>Display: Remote display wireless (via NFC app), Android or iOS LED ring light for status display and warning;</p>	<p><b>Controller module</b>, tool-free replacement during operation; integrated web interface for monitoring and management</p> <p>Display: Remote display wireless (via NFC app), Android or iOS LED ring light for status display and warning;</p>	<p><b>Daisy chain module</b>, tool-free replacement during operation; for connection to a controller or gateway module</p> <p>Display: Remote display wireless (via NFC app), Android or iOS LED ring light for status display and warning;</p>
Supported network protocols	Embedded SSL Security (HTTPS), IPv4, IPv6, DHCP, DNS, HTTP, HTTPS, SSL, SNMP v1/2c/3, SNMP Trap, Modbus TCP, IPAPI, NTP, SMTP, WebSocket, Syslog, SSH Command Line Interface. Data export to MySQL and SQL Server	None, as network connection is only possible via gateway or controller module	Embedded SSL Security (HTTPS), IPv4, IPv6, DHCP, DNS, HTTP, HTTPS, SSL, SNMP v1/2c/3, SNMP Trap, Modbus TCP, IPAPI, NTP, SMTP, WebSocket, Syslog, SSH Command Line Interface. Data export to MySQL and SQL Server	None, as network connection is only possible via gateway or controller module
Connectivity	Data bus: 2xRJ45 daisy chain; Ethernet: RJ45; Sensor port: 2 x USB	Data bus: 2xRJ45 daisy chain; Sensor port: 2 x USB	Data bus: 2xRJ45 daisy chain; Ethernet: RJ45; Sensor port: 2 x USB	Data bus: 2xRJ45 daisy chain; Sensor port: 2 x USB
Mounting bracket	19" mounting bracket, installation height 1.5 U	19" mounting bracket, installation height 1.5 U	19" mounting bracket, installation height 1.5 U	19" mounting bracket, installation height 1.5 U
Management type	Switched	Switched	Switched	Switched
Differential current measurement	No	No	Yes; self-test every 6 hours; measurement of: DC, pulsed DC and AC up to 1 kHz (effective value)	Yes; self-test every 6 hours; measurement of: DC, pulsed DC and AC up to 1 kHz (effective value)
Power output Sockets	3x CEE 7/3 (type F) (Schuko)	3x CEE 7/3 (type F) (Schuko)	3x CEE 7/3 (type F) (Schuko)	3x CEE 7/3 (type F) (Schuko)

## Integration of environmental sensors for proactive monitoring of critical infrastructure



### Temperature sensor

Temperature measurement  
 Measuring range: 0 °C–70 °C  
 Measuring accuracy: +/- 1 %

Order-no.	UP
03.800.021.9	1 unit



### Temperature and humidity sensor

Temperature measurement, humidity measurement  
 Measuring range: 0 °C–70 °C (temp) / 0–100% rel. (hum)  
 Measuring accuracy: +/- 1% (temp) / +/- 5% (hum)

Order-no.	UP
03.800.022.9	1 unit



### Input sensor

2 digital input contacts for connecting a door contact.  
 Also suitable for other devices (status monitoring).

Order-no.	UP
03.800.023.9	1 unit



### Input / Output sensor

4 digital input contacts. 2 output contacts.  
 Use as potential-free outputs.

Order-no.	UP
03.800.024.9	1 unit



### USB connection cable

For connecting the CEC unit to the first sensor.  
 USB-A to USB-C (lockable).

Order-no.	UP
03.800.025.9	1 unit

**Note:** The individual sensors are connected to each other using standard network cables (CAT6). These are not included in the scope of delivery and must be ordered separately in the desired length.



### Door contact sensor

The door contact sensor detects when a door or cabinet is open or closed. The magnetic bridge sensor responds to any magnetically conductive material (no special counterpart required). Can also be used to monitor side panels.

Length	Order-no.	UP
4 m	06.108.115.9	1 unit





# WARRANTY & MAINTENANCE PACKAGES

## ESSENTIAL



### SCOPE OF SERVICES:

- **24/7 service hotline** – available at all times for rapid support from our experts
- **Reliable fault rectification** – service call-out within a maximum of 10 working days
- **Replacement parts included** – no additional material costs in the event of a fault

### Knürr® Warranty – ESSENTIAL

Description	Order-nr.
Warranty 24 months (2Y)	94.000.024.0
Warranty 36 months (3Y)	94.000.036.0
Warranty 48 months (4Y)	94.000.048.0
Warranty 60 months (5Y)	94.000.060.0

### Knürr® proactive on-site maintenance

Description	Order-nr.
Maintenance	94.001.000.0
Maintenance with DGUV/V3	94.001.000.0000001
Maintenance with Thermoscan	94.001.000.0000002

\*In accordance with Knürr warranty terms and conditions

## PREMIUM



### SCOPE OF SERVICES:

- **24/7 service hotline** – available at all times for rapid support from our experts
- **Reliable fault rectification** – service call-out within a maximum of 5 working days
- **Replacement parts included** – no additional material costs in the event of a fault
- **On-site repairs included** – travel costs and labour costs are already included in the service package

### Knürr® Warranty – PREMIUM

Description	Order-nr.
Warranty 24 months (2Y)	94.000.024.1
Warranty 36 months (3Y)	94.000.036.1
Warranty 48 months (4Y)	94.000.048.1
Warranty 60 months (5Y)	94.000.060.1
Warranty 72 months (6Y)	94.000.072.1
Warranty 84 months (7Y)	94.000.084.1
Warranty 96 months (8Y)	94.000.096.1
Warranty 108 months (9Y)	94.000.108.1
Warranty 120 months (10Y)	94.000.120.1

## Ergonomically designed products and solutions from a single source

Knürr GmbH is one of the world's leading specialists for innovative solutions in safety- and performance-critical control centres and command rooms. For more than 50 years, the company, headquartered in Germany, has been delivering tailor-made and fully integrated workspace systems designed for demanding 24/7 operations.

Learn more about Knürr solutions and services at [www.knuerr.com](http://www.knuerr.com)

Knürr GmbH  
 Mariakirchener Straße 38  
 94424 Arnstorf  
 Germany  
 T +49 8723 28 0  
 F +49 8723 28 138  
 info@knuerr.com  
 www.knuerr.com



**knürr**  
World of control rooms

**knuerr.com** | **Knürr GmbH**, Mariakirchener Straße 38, 94424 Arnstorf, Germany ID-Nr. DE 363797731

© 2026 Knürr GmbH. All rights reserved. Knürr® and the Knürr logo are trademarks or registered trademarks of Knürr GmbH. All other names and logos referred to are trade names, trademarks or registered trademarks of their respective owners. While every precaution has been taken to ensure accuracy and completeness herein, Knürr GmbH assumes no responsibility, and disclaims all liability, for damages resulting from use of this information or for any errors or omissions. Specifications are subject to change without notice.

09.991.116.0.000001 • EN • #10065 Version 19.03.2026